

AVAILABLE THROUGH

GRAINGER

FOR THE ONES WHO GET IT DONE

GRAINGER.COM® | 1.800.GRAINGER

PROCELL[®]
PROFESSIONAL BATTERIES

**PREPARE YOUR BUSINESS
FOR EMERGENCIES**



Fires and other devastating disasters can strike without warning. Take steps today to protect your employees, customers, and property by powering smoke and CO detectors, flashlights, security cameras, alarms, sensors, and other critical safety devices with long-lasting PROCELL[®] batteries.

With the world's first dual portfolio of professional batteries, PROCELL[®] offers the right battery to match the needs of your devices, so you can make all your batteries last longer* and replace them less often.

TIPS FOR YOUR BUSINESS

CONDUCT REGULAR BATTERY MAINTENANCE
CHECK SUPPLY AND INVENTORY LEVELS OFTEN
STOCK-UP ON PROCELL[®] BATTERIES

PROCELL[®] INTENSE POWER ALKALINE BATTERIES

Specifically engineered to deliver precise pulses of energy while lasting longer in high-drain professional devices.*

GRAINGER PART #	MFR. #	CELL	PACK QTY.	PACKS PER CASE
55EC97	PX1500	AA	24	6
60GV42	PX2400	AAA	24	6
55EC95	PX1300	D	12	6
55EC96	PX1400	C	12	6
60GV43	PX1300	9V	12	6

PROCELL[®] ALKALINE BATTERIES

Completely redesigned for longer lasting*, consistent performance in general purpose professional devices.

GRAINGER PART #	MFR. #	CELL	PACK QTY.	PACKS PER CASE
5LE23	PC1500	AA	24	6
5LE25	PC2400	AAA	24	6
5LE21	PC1300	D	12	6
5LE22	PC1400	C	12	6
5LE24	PC1300	9V	12	6

PROCELL[®] HIGH POWER LITHIUM & LITHIUM COIN BATTERIES

GRAINGER PART #	MFR. #	CELL	PACK	PACKS PER CASE
56FJ74	PC2016	2016	5	40
56FJ73	PC2025	2025	5	40
56FJ72	PC2032	2032	5	40
11W123	PC123	123	12	18

*vs. prior PROCELL[®] AA, AAA, C, D and 9V batteries

© Duracell Industrial Operations, Inc.

AVAILABLE THROUGH

GRAINGER®

FOR THE ONES WHO GET IT DONE

GRAINGER.COM® | 1.800.GRAINGER

PROCELL®

BY THE DURACELL® COMPANY

REPLACE LESS. SAVE MORE.



IF YOU PAY LESS FOR BATTERIES, YOU MIGHT PAY EXTRA FOR LABOR

Introducing the new and updated PROCELL® dual portfolio of alkaline batteries: PROCELL® Intense Power and PROCELL® Constant Power batteries. By selecting the right battery to match the power needs of your professional device, you can make your batteries last longer* and replace them less often.



Calculate how much switching to PROCELL® could save you, so you can see less of him.
[Scan the QR code](#) to discover how long lasting PROCELL® batteries can help you save money on replacement labor costs.**



PROCELL® INTENSE POWER

GRAINGER PART #	MFR #	CELL	PACK	PACKS PER CASE
55EC97	PX1500	AA	24	144
60GV42	PX2400	AAA	24	144
55EC96	PX1400	C	12	72
55EC95	PX1300	D	12	72
60GV43	PX1604	9V	12	72

Examples Of High-Drain Devices:

- Automatic Odorizers Automatic Air Fresheners
- Touchless Faucets
- Touchless Soap Dispensers
- Touchless Hand Sanitizer Dispensers
- Touchless Paper Towel Dispensers

PROCELL® CONSTANT POWER

GRAINGER PART #	MFR #	CELL	PACK	PACKS PER CASE
5LE23	PC1500	AA	24	144
5LE25	PC2400	AAA	24	144
5LE22	PC1400	C	12	72
5LE21	PC1300	D	12	72
5LE24	PC1604	9V	12	72

Examples Of Low-Drain Devices:

- Flushometers
- Motion / Occupancy Sensors
- Light Sensors
- Smoke / Carbon Monoxide Detectors

FOR MORE INFORMATION CONTACT YOUR GRAINGER
REPRESENTATIVE OR VISIT GRAINGER.COM

Duracell Industrial Operations, Inc.

*VS. PRIOR PROCELL® AA, AAA, C, AND D BATTERIES

**This is an estimated cost calculation based on specific makes and models of devices versus relevant competition. The results will vary based on specific devices, usage habits, current batteries used, size of facilities, conditions and commercial maintenance schedules of devices including wages.

PROCELL®
BY THE DURACELL® COMPANY

PREMIERE® LIQUID ICE MELTER



- Melts Ice Down to -20°F/-29°C
- Will Not Stain Carpets or Floors*
- Will Not Damage Shoes*
- Inhibits Metal Corrosion
- Safer for Vegetation Than Calcium Chloride Based De-Icers*

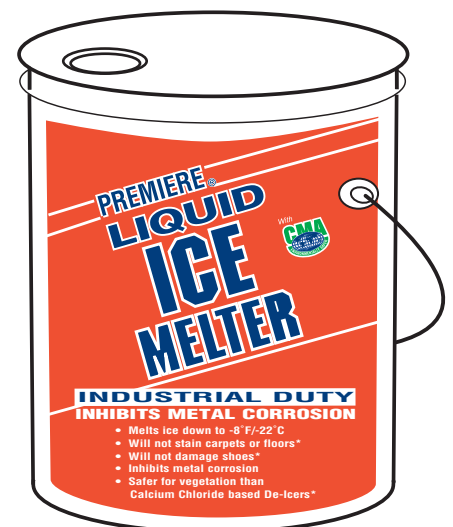
INDUSTRIAL DUTY
INHIBITS METAL CORROSION

DESTROYS ICE... NOTHING ELSE.

- **Non-Chloride Containing Making it Non-Corrosive.**
- **Use in Areas Like Stairs Where Pellet Ice Melters Increase Slip Hazards.**
- **Use Before Storms to Prevent Snow and Ice From Adhering to Pavement.**
- **Effective to -20°F/29°C So it Works in the Coldest of Extremes.**
- **Can Be Used to Pretreat Rock Salt to Improve Performance.**

Suggested Uses:

- Stairwells where solid deicers can create a slipping hazard.
- Parking structures where chloride-containing ice melters can cause corrosive damage.
- Sidewalks and entryways before a storm to prevent ice from forming and to ease snow removal.
- Following ice storms to deice and break the bond ice forms with concrete.
- Prewetting road salt to increase performance at low temperatures.



5 gal bucket

Part # 3YB71
36 per pallet
12 Ti - 3 Hi



PROPERTY CARE INDOOR



MOBILITY



TIME-SAVINGS



LOWER NOISE

XGT® 40V | 80V max

LXT® 18V | 36V

Maximize productivity with Makita® Cordless Janitorial and Facilities Maintenance Products. Powered by both XGT® and LXT® systems, Makita delivers reliable, cord-free performance for faster cleaning, easier access, and lower maintenance costs. From vacuums to blowers and accessories, Makita offers a complete solution across two powerful cordless platforms.

UPRIGHT VACUUM



XGT® 40V max

412GA2 | GCV09L1
40V max XGT® Brushless Cordless
1.3 Gallon HEPA Filter 15"
Upright Vacuum Kit (8.0Ah)

Up to 160 minutes of continuous
run time on low setting and up
40 minutes on high setting using
one 40V XGT® 8.0Ah battery



361VCO | 191T96-3

Fleece Filter
Dust Bag, 10/pk

Compatible with
XCV19, GCV09



780AWO | 191E39-5

HEPA Filter

Compatible with GCV09L1



COMPACT VACUUMS

XGT® 40V max

787KK7 | GLC01R1
40V max XGT® Brushless
4-Speed HEPA Filter
Compact Stick Vacuum Kit

Over 2X more suction
power with 42 CFM and
84" static water lift



787EM7 | 191D72-1

Black Cyclonic Vacuum
Attachment w/ Lock

Compatible with
GLC01 Vacuum



811P91 | 199989-8

HEPA FILTER

Compatible with GLC01



XGT® 40V max

811P98 | GLC03Z
40V max XGT® Brushless
Cordless Cyclonic 4-Speed HEPA Filter
Compact Stick Vacuum, Tool Only

Over 80% more suction power
with 35 CFM and 80" static water
lift (compared to XLC04)



BACKPACK VACUUMS

XGT® 40V max

806T87 | GCV05T1X
40V max XGT® Brushless Cordless
2 Quart HEPA Filter Backpack
Dry Vacuum Kit (5.0Ah)

Up to 2X more suction power with 85 CFM
and 72" water lift (compared to XCV09)



780U03 | 197903-8

Filter Dust Bag, 10/pk

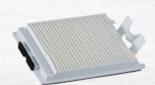
Compatible with GCV05



811P86 | 127725-2

HEPA Filter

Compatible with GCV05



XGT® 40V max

412FX9 | GCV08PM
40V max XGT® Brushless
Cordless 6 Quart HEPA Filter
Dry Backpack Vacuum Kit

Over 2X more suction power with 85 CFM
and 80" water lift



811P85 | 191C26-2

Filter Bag, 10/pk

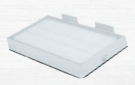
Compatible with GCV08



811P97 | 191D12-9

Main HEPA Filter

Compatible with GCV08



POLISHER/SCRUBBER

XGT® 40V max

NEW GSP01M1**
40V XGT® Brushless
8" Polisher/Scrubber

Over 3-1/2 hours of run time on
low and 48 minutes on high with
40V XGT® 4.0Ah battery



DUST BLOWER

XGT® 40V max

385KK7 | GSA01Z
40V max XGT® Brushless
Cordless High Speed
Dust Blower, Tool Only

4 Digitally controlled speeds delivers
up to 447 MPH and 39 CFM



ROBOTIC VACUUMS

LXT® 18V

811P81 | DRC300PT
18V X2 LXT® Brushless
Cordless Smart Robotic HEPA
Filter Vacuum Kit (5.0Ah)

Innovative LiDAR sensor technology and front camera sensor help
to map and save up to 5 rooms totaling over 100,000 square feet



makitatools.com/cleaning

AVAILABLE THROUGH
GRAINGER®
FOR THE ONES WHO GET IT DONE



PROPERTY CARE OUTDOOR



REDUCED MAINTENANCE



ZERO EMISSIONS



LOWER NOISE

XGT® 40V | 80V max

LXT® 18V | 36V

Makita® delivers powerful outdoor solutions with its LXT® 18V and XGT® 40V | 80V max systems - offering tools for everything from trimming to heavy-duty cutting, all with low maintenance and zero emissions.

VACUUM SWEEPER



XGT® 40V max
848D91 | GSV01PL
40V max XGT® 25-1/2" Cordless Vacuum Sweeper Kit (8.0Ah)

Faster Efficient Cleaning,
Up to 11X faster than a broom

BLOWERS



XGT® 40V max
373VZ5 | GBU01M1
40V XGT® Brushless Blower Kit

Up to 44% more blowing force
than a 24.5cc gas blower

PRESSURE WASHER



XGT® 40V max
412GA9 | GWH01Z
40V max XGT® Brushless Cordless 1300 PSI 1.5 GPM Pressure Washer, Tool Only

Delivers up to 1300 PSI and 1.5 GPM without the hassles of power cords

HEDGE TRIMMERS



XGT® 40V max
787KY2 | GHU02M1
40V max XGT® Brushless 24" Hedge Trimmer Kit

Makita-built brushless motor delivers power of a 22.7cc gas hedge trimmer



XGT® 40V max
850CL9 | GNU01M1
40V max XGT® Brushless Cordless 24" Articulating Pole Hedge Trimmer Kit (4.0Ah)

6 angle settings for efficient trimming of overhead and low-lying hedges

STRING TRIMMERS

XGT® 40V max
373WA2 | GRU01M1
40V max XGT® Brushless 15" String Trimmer Kit

Makita-built outer rotor brushless motor delivers the power of a 25cc gas string trimmer



XGT® 40V max
385KK3 | GRU03M1
40V max XGT® Brushless Cordless 17" String Trimmer Kit (4.0Ah)

Makita-built brushless motor delivers power of a 30cc gas string trimmer



POLE SAW

XGT® 40V max
385KG6 | GAU02M1
40V max XGT® Brushless 10" Telescoping Pole Saw Kit, 13' Length

Makita-built brushless motor delivers the power of a 35cc gas pole saw



POWER HEAD AND ATTACHMENTS

XGT® 40V max
787KY6 | GUX01JM1X1
40V max XGT® Brushless Power Head Kit, 17" String Trimmer (4.0Ah)

Makita-built Brushless Motor delivers power of 30cc gas string trimmer



NEW | BR400MP**
Bristle Brush Couple Shaft Attachment, for use with GUX01

Wide sweeping surface of 23-5/8" for maximum productivity



NEW | SN400MP**
12" Snow Shovel Attachment, for use with GUX01

Clears up to 5 parking spots on a single charge



NEW | EN424MP**
14" Ground Trimmer Couple Shaft Attachment

14" dual action shear blade with 3-sided teeth for clean cuts



*17 total attachments available - Please see makitatools.com for more information

GRAINGER.COM® | 1.800.GRAINGER

The MAKITA TEAL COLOR is the trade dress of Makita Corporation and is protected under common law and registered with the U.S. Patent and Trademark Office. The Makita Black & White color combination is the trade dress of Makita Corporation and is protected under common law with the U.S. Patent and Trademark Office. GRA-0625 MA-15857-25

**All new items are available through Grainger sourcing only

AVAILABLE THROUGH

GRAINGER®
FOR THE ONES WHO GET IT DONE